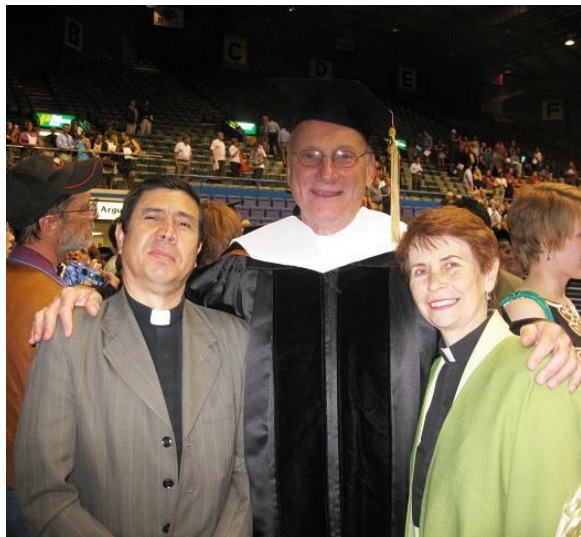


Joyful and thankful greetings to of all of you our missionary friends and supporters in the United States! This is our April and May 2010 update for Leadership & Development LIZWAN and its sister organization in Colombia, the Emmaus Road Foundation. Though this update is longer than usual, we consider extremely important to share it with you.

With this update we are sharing the exciting news that our plans to have a hospitality place to welcome and facilitate ongoing cross-cultural and international mission relationships here in Bogotá Colombia, is officially moving forward. The mission dream we had shared in our Annual 2009 Report, is turning into reality as we are finalizing negotiations with the Evangelical Lutheran Church of Colombia- IELCO to purchase the second floor of a brand new facility which is currently being constructed by IELCO next to its existing headquarters. By being together in the same place, no doubt our mutual mission relationships will be significantly enhanced and blessed. We are excited about this fresh new development. This place of hospitality opens up many exciting possibilities for people-to-people-relationships.

After much prayer, consultations and working sessions, as the Boards of Directors of LIZWAN/ Emmaus we have finally approved this fundraising project which we are sharing with you. This project represents our most significant priority. It is envisioned holistically to address sustainability, accountability and expandability in mission. It is our hope that visiting groups in 2011 will be able to stay at these facilities. This year 2010 we have had to find hospitality in a different place for at least three visiting groups. As our faithful supporters, we entrust this mission project to your prayerful consideration and generosity. We have included different photos to give you a real glimpse of our mission! The photos follow the description of the project.



LIZWAN Board of Directors: Pastors Barbara Wangsness, Larry Peterson and Natanael Lizarazo. Pr. Larry was granted an Honorary Doctoral Degree by Augustana College in 2009 in recognition of his significant contributions to cross-cultural relationships in South Dakota!



Board of Directors of The Emmaus Road Foundation: From left to right: Pastor Martin Gonzales (LIZWAN graduate) Mrs. Olga Mora, Lic. Alfonso Corzo (former CEO of Bible Society of Colombia), Pastor Gustavo Torres (LIZWAN graduate), Ms. Stella Lizarazo (LIZWAN graduate) & Pr. Natanael Lizarazo.

**Vital Infrastructure for the sake of God's mission: A Macedonian Call from Colombia!
Our Spirit-led and Mission-driven Invitation!**

During the night Paul had a vision of a man of Macedonia standing and begging him, "Come to over to Macedonia and help us." After Paul had seen the vision, we got ready at once to leave for Macedonia, concluding that God had called us to preach the gospel to them. Acts 16: 9-10

To our USA missionary friends, colleagues and companions:

Relationships are at the very heart of this invitation. We write to you in the context of longstanding friendships and mission relationships. As Board of Directors for Leadership & Development LIZWAN, we are ELCA Pastors Larry Peterson, Barbara Wangsness and Natanael Lizarazo. Our lives and ministries continue to be invested in facilitating cross-cultural and global missions in the very places where God continues to give us the opportunity to serve. In the case of Colombia, our Emmaus Road Foundation Board knows you through your prayers, visits, communications, personal visits and precious financial gifts! We hope and pray you will recognize us as your friends and colleagues!

Obviously, we firmly believe that ministry and mission are, by their very nature, a communal endeavor. Dr. John Maxwell eloquently expresses our mission approach when he states: "I am convinced that a God-given ministry vision is always too large for us to accomplish alone. No individual or organization possesses all the talents and resources necessary to accomplish the task. Quite honestly, if you can achieve your dream all alone, your dream is very likely not from God. God-sized dreams require the help of both God and others. Partnership is a crucial part of God's design for us" (Raising More than Money: Redefining generosity, Reflecting God's heart).

Our humble yet fruitful trajectory of 19 years of healing and empowering ministry as Leadership & Development LIZWAN is now leading us to cross another significant threshold. Confident in the leading of the Holy Spirit, we are fully committed to accomplish these mission outcomes:

- Secure a place for our office and a welcoming place of hospitality and cross-cultural/global mission immersion in Bogota, Colombia. **Besides our office, this place will have capacity to constantly host groups of up to 14 people. We are purchasing the second floor in a four-story building being constructed by the Evangelical Lutheran Church of Colombia.**
- Strengthen our services, particularly the granting of much needed scholarships for children and youth to pursue formal education and training in Christian leadership!
- Move toward greater sustainability by strengthening our LIZWAN Endowment!

In sharing this mission project, we pray that the Holy Spirit may lead you to hear our Macedonian call, our heart-felt and Spirit-lead invitation to you: "Come over to Colombia and help us." Yes! "Come over to Colombia and help us."

Mission Goals

- Facilitate people to people cross-cultural and international relationships between Lutherans and other Christians in the US and Colombia. People-to-people and ecumenical relationships are critically important to this project.
- Provide a welcoming place of hospitality, mission immersion/reflection and ongoing Christian leadership development in the overall context of the Evangelical Lutheran church of Colombia.
- Teach Spanish/ English as mission tools to better engage our mutual mission relationships. This component is critically important to engage volunteers and to further facilitate ongoing communication and interpretation of our shared mission.
- Seek mission sustainability to further invest in formal education and other services offered by the Foundation. This infrastructure makes us visible and credible to pursue grants and larger projects with other non-church related organizations.
- Engage our mutual mission gifts for the sake of God's mission in our own places.

Mission Plan

- Invite 50 individuals, Sunday schools, Women Groups, to invest \$500.00 per year during three years. Already we have a growing number of these groups supporting LIZWAN.
- Invite 25 individuals to invest \$1,000.00 per year during three years. **We Founders of LIZWAN are committed to this level. Other individuals are committed as well.**
- Invite 10 congregations to invest \$2,500.00 per year during three years.
- Invite five congregations/organizations to invest \$5,000.00 per year during three years.
- We are working on a lead gift from a Foundation to invest \$100,000.00
- Other gifts are welcome! Grants will be sought with different organizations.
- Designated gifts are also welcome. All gifts will be recognized and celebrated in the "Wall of Servant Ministry" that is integral part of the place of Hospitality.
- **LIZWAN/Emmaus Road Foundation have already contributed 25% of the cost for this place! The total estimated cost is about \$100,000.00.**
- Fundraising activities will be taken place both here in the USA as well as in Colombia!

Proposed Use of Resources

The approach of this particular project has been prayerfully considered and holistically envisioned to strengthen relationships, build sustainability and increase capacity-building for ongoing service. Therefore, we are proposing that contributed resources be used this way:

- 30% mission infrastructure, specifically our place of hospitality!
- 40% ongoing services of the Emmaus Road Foundation!
- 30% endowment for self-sustainability!

Our Ongoing Commitments to all our supporters

- Personalized and regular communication, interpretation and celebration
- Accountability for the use of your gifts
- Availability of resources such as mission stories, short videos, photos, recipes of Colombian food, crafts, for you or your congregation.
- Monthly updates via e-mail
- Celebratory Annual Report
- English webpage to follow up ongoing developments
- Availability to preach, mission festivals and ongoing interpretation
- Mutually well-planned exchanges and mission/vision trips!

We invite your generosity in these specific ways

- Pray regularly for God's mission in Colombia
- Share this mission story with your friends and congregation
- Encourage mission volunteers from your congregation
- Participate in a mission immersion in Colombia at least once during these three years!
- Honor your mission gift as mutually agreed.

Where to Send Your Gifts

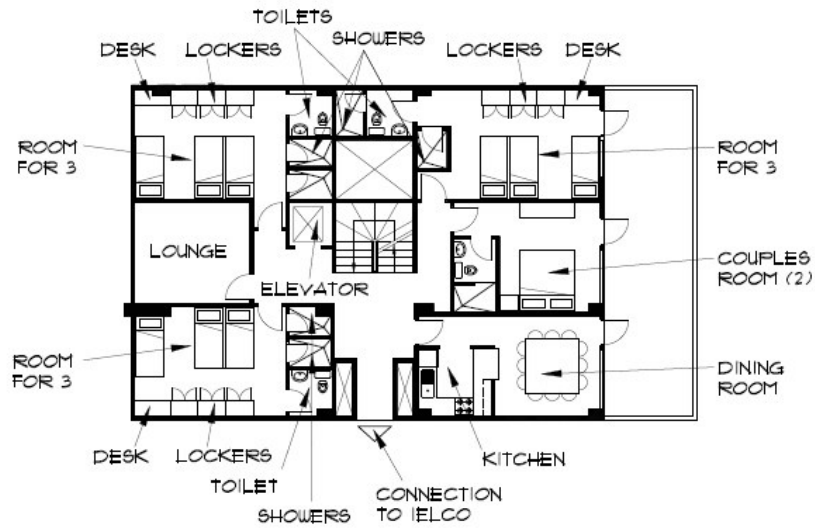
Gifts can be sent to Leadership & Development LIZWAN, attention Pastor Natanael Lizarazo, 47237-257th Street, Renner, SD 57055. **For tax-deductible receipts, checks must be made to First**

Lutheran Church or to Southeastern MN Synod-ELCA. For more information about the LIZWAN Ministry, please log on to <http://www.emmausroadfoundation.org>. In the USA, feel free to contact Pastors Larry Peterson (cell 605-430-0860) email larry57745@gmail.com, Barbara Wangsness (cell 605-261-1374) email norge@alliancecom.net, and Natanael Lizarazo (cell 605-261-7450) email lizwan@alliancecom.net.

Toward a Biblical Practice of Mission Generosity and gratitude

Since we started recalling Paul's willingness to respond to his Macedonian call, it is only fitting to close with the surprising mission fruits shown by the Macedonian Churches: **And now brothers, we want you to know about the grace that God has given the Macedonian Churches. Out of their severe trial, their overflowing joy and their extreme poverty welled up in rich generosity. For I testify that they gave as much as they were able, and even beyond their ability. Entirely on their own, they urgently pleaded with us for the privilege of sharing in this service to the saints. And they did not do as we expected, but they gave themselves first to the Lord and then to us in keeping with God's will. 2 Corinthians 8:1-5**

By the grace of God and our generosity as God's people, like the Macedonian Churches, we too will celebrate our mutual mission relationships, provide ongoing formal education among the Colombian poor and secure stronger mission foundations to serve holistic mission possibilities in Colombia! **Solo Deo Gloria! To God Alone the Glory!**



LAYOUT with 3 Rooms for 3 Persons +
1 Couples Room = 11 Persons Total

SECOND FLOOR PLAN (PLANTA SEGUNDO PISO)

SCALE 1:200

LIZWAN Facilities at the IELCO Apartment Building in Bogota, Colombia

May 2010

*

Drawing No. COL 11.05.02

*

SW/AJ



MSAADA

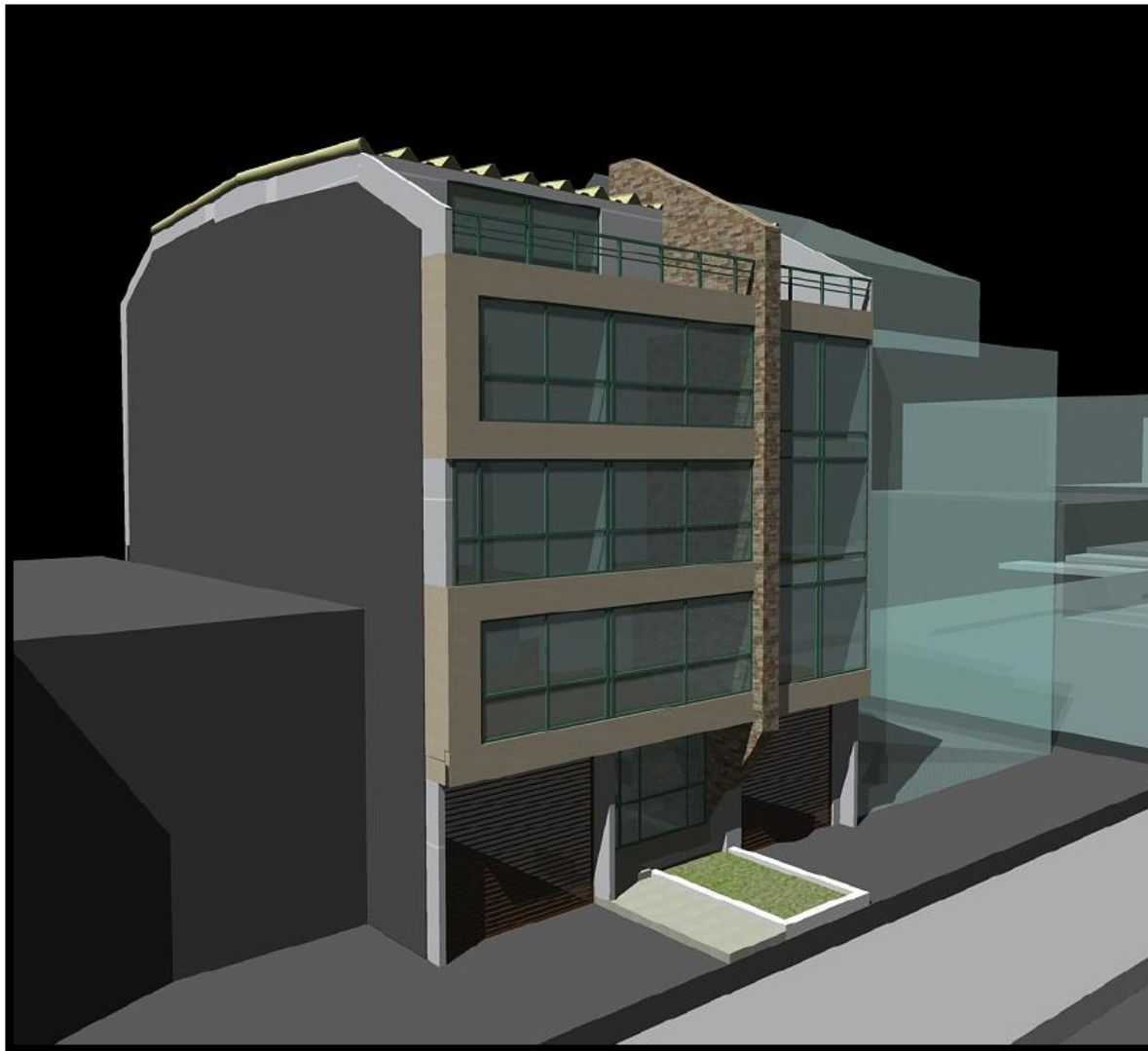
Architects

ARCHITECTURE * PLANNING * ENGINEERING * SUPERVISION
SPECIALIZING IN CHURCH - SPONSORED PROJECTS WORLDWIDE

122 Franklin Ave. West, Suite 518 * Minneapolis, Mn 55404 * Phone: (612)259-0054 * Fax: (612)259-0056 * Email: info@msaada.com

APARTAMENTOS IELCO

IMAGENES





AREA URBANA
ARQUITECTURA Y URBANISMO

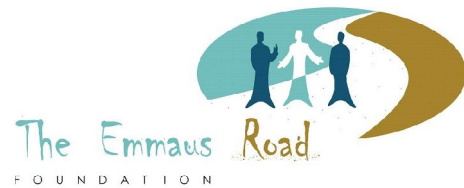
APARTAMENTOS

I E L C O





Part of our mission as LIZWAN/Emmaus Road Foundation is to facilitate mission relationships and bilingual communication as our ongoing support to the Evangelical Lutheran Church of Colombia - IELCO.



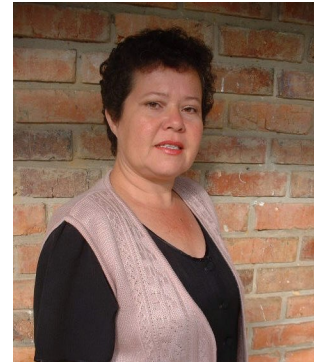


LIZWAN/Emmaus Road Foundation will continue to strengthen mutual mission relationships and cooperation with the Evangelical Lutheran Church of Colombia - IELCO.

LIZWAN/Emmaus Road Foundation will continue to walk in solidarity among the poor and celebrating empowering mutual relationships!



LIZWAN/Emmaus Road Foundation will continue accompanying the mission of the Lutheran Church of Colombia by investing in formal education & Christian leadership development of its members.



We ask your prayers for:

- LIZWAN/Emmaus Road Foundation ongoing plans to have hospitality place to welcome and facilitate ongoing cross-cultural and international mission relationships in Bogotá Colombia.
- Upcoming visit of Custer Lutheran Fellowship to Colombia from May 28 – June 7, 2010.

Feel free to communicate with us! We like to hear from you! Our e-mail addresses are the following: ldlizwan@ielco.org (Colombia) lizwan@alliancecom.net and 4290@flcsf.org (USA). If for any reason you change your email address, we greatly appreciate letting us know so that we can keep you in our e-mailing list. If you know of anyone interested in our ministry, feel free to share this information! You can find us in the web at <http://www.emmausroadfoundation.org>.

In Christ's love,

Stella Lizarazo

Executive Director Emmaus Road Foundation – Colombia